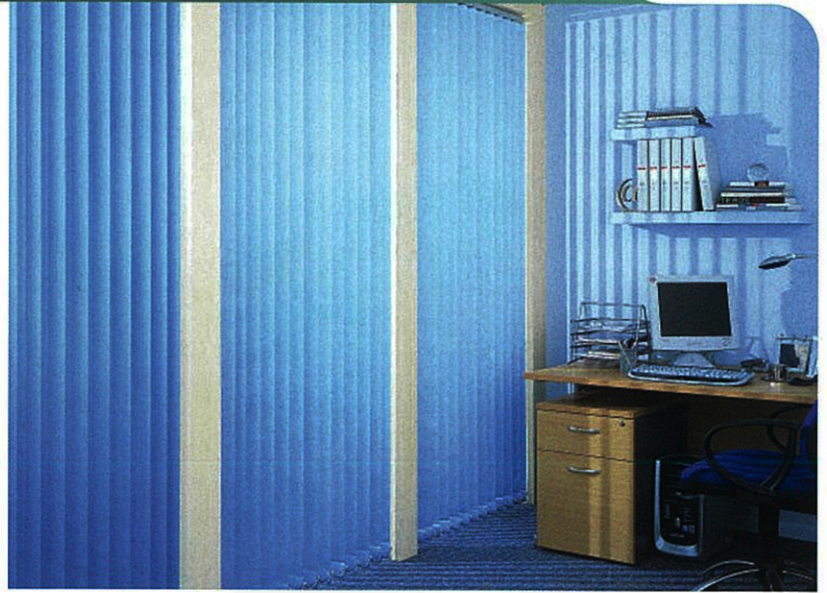


SP VERTICAL PULL CHAIN SYSTEM



Vertical blinds simple, modern can be alternative to curtain, With different type of patterns, textures, fabrics, sure can transform your office or living space in an instant and more appealing. A custom made vertical window blinds is often used to decorate the window of office but as well for home decor. These window come as standard with headrail in white, stacking on right hand side, and top fix bracket. Now you may decide on the way they are stacked.

Product Features:

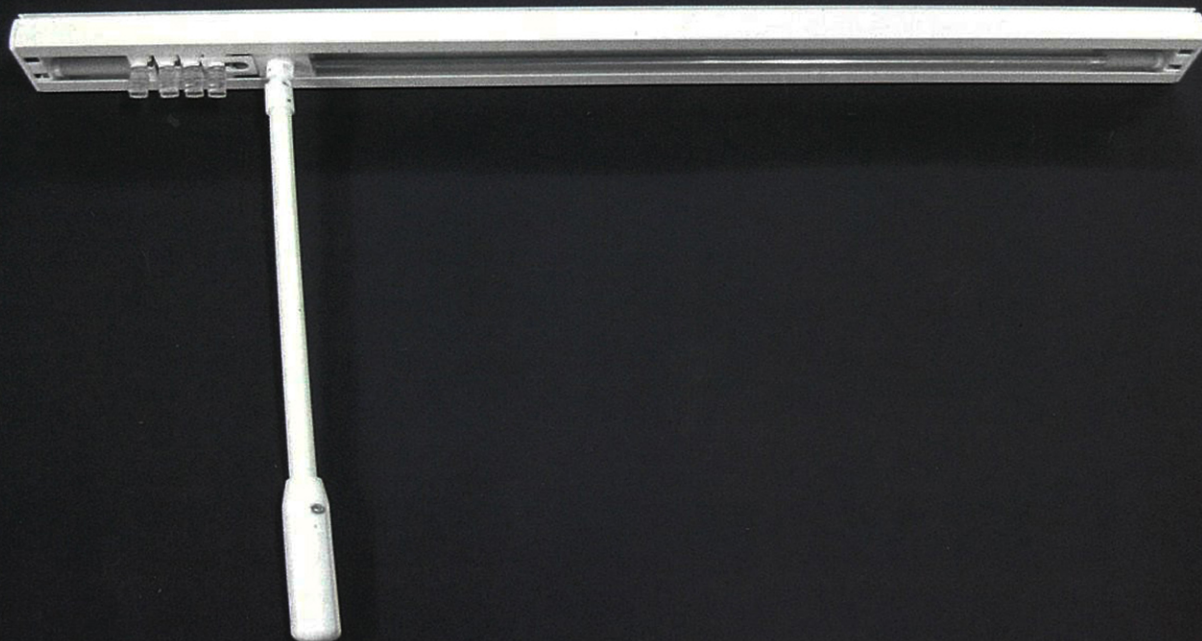
- Oval track headrail size 25mm X 44mm X 1.2mm
- Electrophoresis by inner and outer track for extra durability.
- High density PVC component.
- Slat hanger are made from high durable polycarbonate to prevents breakage, chipping and enhances the overall appearances.
- Bottom weight 5mm X 40mm polypropylene compounded with high quantity resin.
- Vertical fabrics size available in 100mm (4"w) and 127mm(5"w)
- Swivel bracket

SP VERTICAL WAND CONTROL SYSTEM



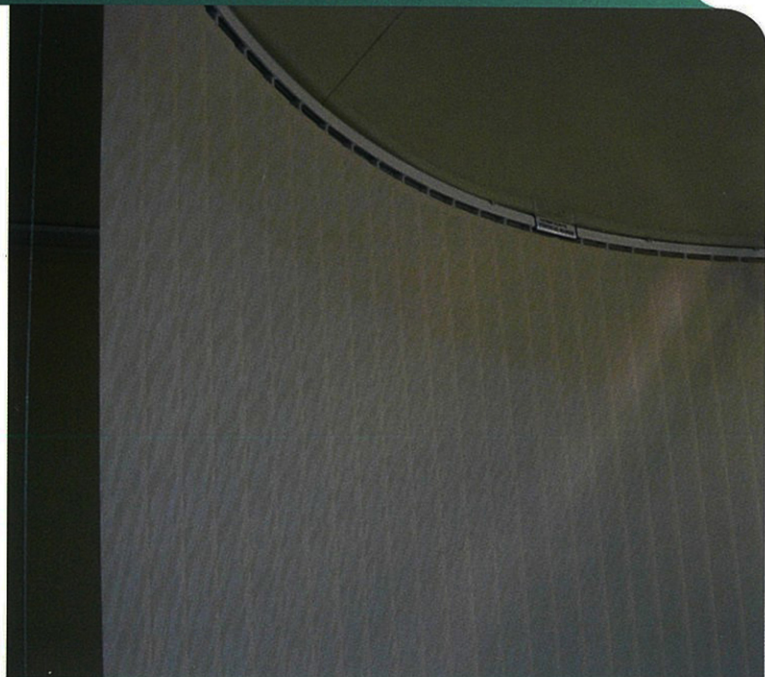
Product Feature:

- Oval track headrail size 25mm X 44mm X 1.2mm
- Electrophoresis by inner and outer track for extra durability
- High density PVC components.
- Slat hanger are made from high durable polycarbonate to prevents breakages, chipping and enhances the overall appearances.
- Bottom weight 5mm X 40mm polypropylene compounded with high quality resin.
- Vertical fabric size available in 100mm (4"w) and 127mm (5"w)
- Heavy duty transparent fabrics H-Hook
- Swivel bracket



SP CURVED & MOTORIZED SYSTEM

In both modern architecture and traditional building alike, curves, arches and bay window are common features. Curved track vertical blinds are the perfect solution. Special bending techniques allow the headrail to be curved into an arch or a bay and still allow the blinds to fully function. By using just one or two tracks to cover the radius instead of numerous smaller blinds the appearance improves dramatically. Now you can even upgrade to our new motorized system.



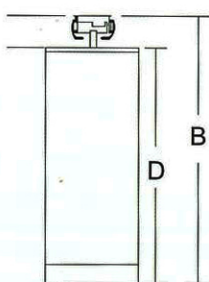
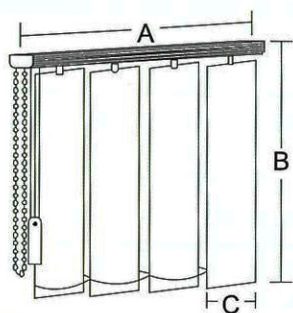
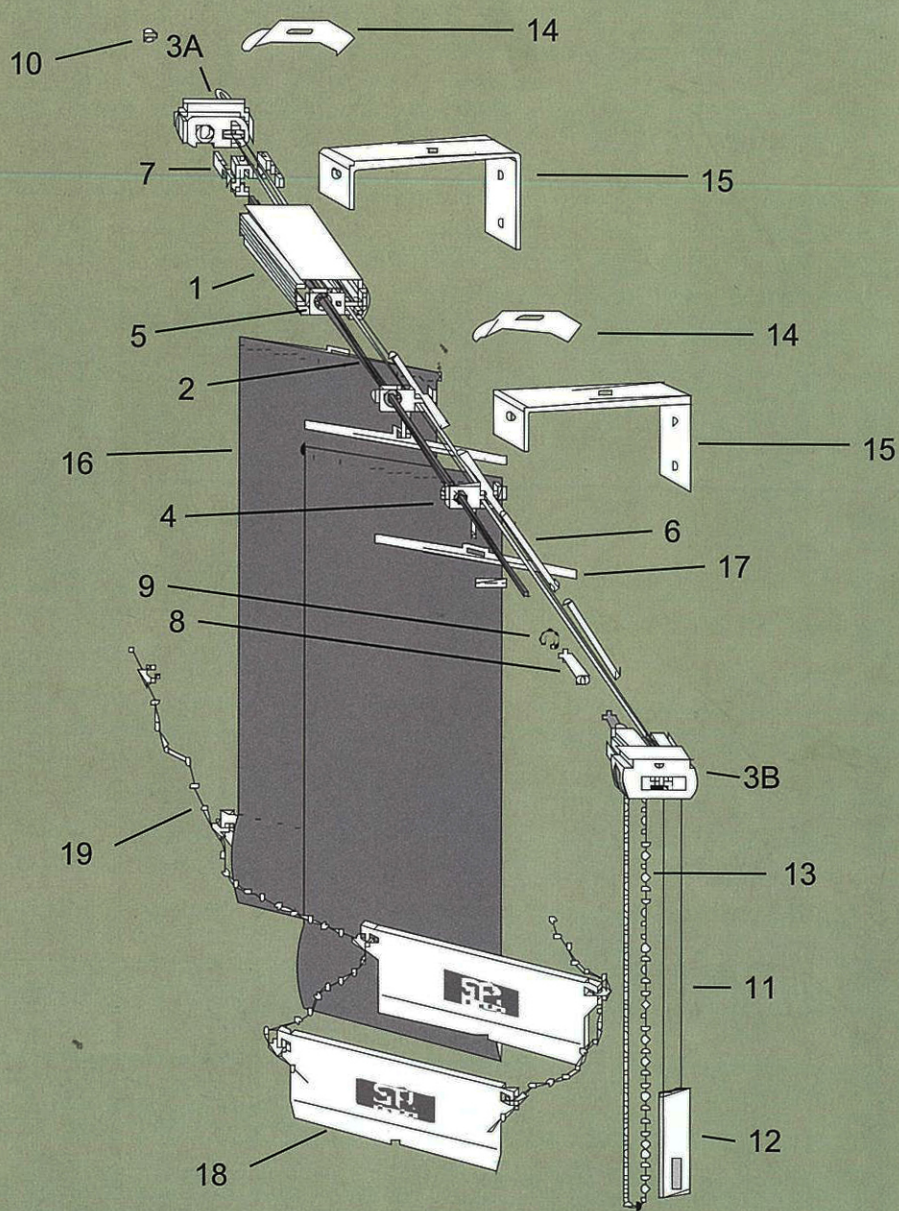
Individual control
one control unit
for one motor.

**Flexible
and
smooth
while operating**

- Curved track headrail size 28mm x 28mm x 0.8mm
- Electrophoresis by inner and outer track for extra durability.
- Slat hanger are made from high durable polycarbonate to prevent breakages. Chipping and enhances the overall appearance.
- Bottom weight 5mm x 40mm polypropylene compounded with high quality resin.
- Vertical fabrics size available in 100mm(4"w) and 127mm (5"w)
- Curved radius : C-curve
- Able to upgrade to motorized system (single channel)
- universal ceiling and wall bracket.

SP Vertical Blinds System

Pull Chain System



A: System Width
B: Blinds Height
C: Fabric Width
D: Fabric Height

- | | |
|----------------------|--------------------|
| ① Aluminium headrail | ⑩ Washer |
| ② Control unit | ⑪ Pull cord |
| ③A end cap | ⑫ Cord Weight |
| ③B control unit | ⑬ Ball chain |
| ④ Runner | ⑭ Ceiling bracket |
| ⑤ connector runner | ⑮ Wall bracket |
| ⑥ Spacer | ⑯ Vertical fabrics |
| ⑦ master carrier | ⑰ Slat hanger |
| ⑧ Distance tube | ⑱ Bottom weight |
| ⑨ G clips | ⑲ Linking chain |